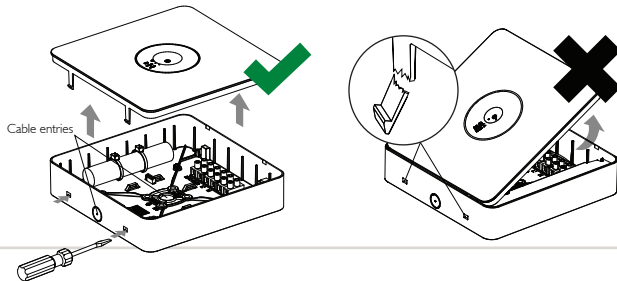


11283 EV-LED-FIRE-SM-LITE

Remove the product from the box and inspect it for any damage. If you believe the product to be damaged or otherwise unsound, **DO NOT** install the product. Please pack it back into its box and return it to the place of purchase for replacement. If the product is satisfactory, proceed with the installation.

INSTALLATION

Remove the cover using a flat blade screwdriver, release the clip by pushing in and down. Lift the cover directly off without turning or twisting. **DO NOT** tilt or bend the cover to get it off the body. Run cabling through one of the cable entry points indicated.



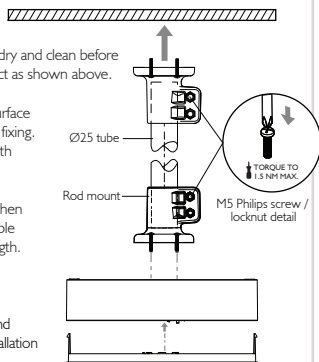
ROD MOUNT (OPTION)

The product and rod **MUST BE** dry and clean before assembly. Disassemble the product as shown above.

Ensure rod is mounted on a flat surface and fastened with the appropriate fixing. Use a tube, push it firmly in on both ends and fasten.

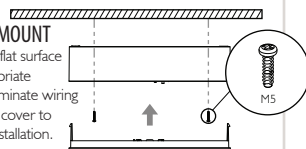
DO NOT over-tighten screws when mounting. The rod mount is suitable with tubes from 0-2 metres in length.

The weight on the rod must not exceed 8kg. Wiring can be run inside rod. Terminate the wiring and replace cover to complete the installation.



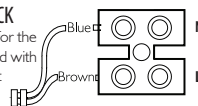
SURFACE MOUNT

Secure to a flat surface using appropriate fasteners, terminate wiring and replace cover to complete installation.



TERMINAL BLOCK

Wiring schematic for the terminal block used with the Surface Mount Ledfire Lite.



REPLACING THE BATTERY

Access the battery by removing the product cover. Disconnect and remove battery. Replace battery as was previously installed. Allow a minimum 24 hours charging time before carrying out any discharge tests as per the requirements in AS/NZS 2293

WARNING

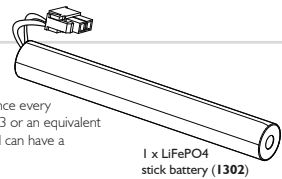
The Ektor Surface Mount Ledfire Lite Emergency Luminaire is connected to an unswitched active during normal operating conditions. When disconnected from the mains supply, the Surface Mount Ledfire Lite is powered by a LiFePO4 battery operated inverter. Due to this, care should be taken when replacing either the battery.

SAFETY WARNINGS

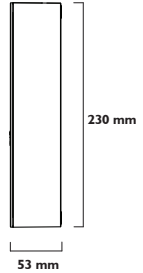
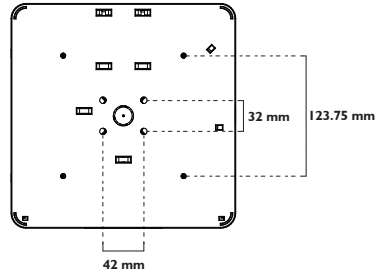
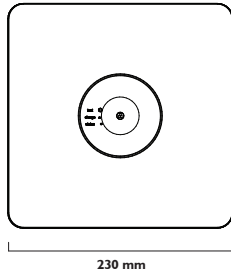
- THIS PRODUCT MUST ONLY BE INSTALLED BY A LICENSED ELECTRICIAN.**
- BEFORE COMMENCING INSTALLATION TURN OFF AND ISOLATE THE ELECTRICAL SUPPLY.**
- DO NOT ENERGISE WITH PRODUCT OPEN OR DISASSEMBLED.**
- SUPPLY VOLTAGES WITHIN PRODUCT. ISOLATE SUPPLY VOLTAGES BEFORE OPENING OR SERVICING.**
- THE ONLY USER SERVICEABLE PART IS THE BATTERY PACK.**
- DO NOT ATTEMPT TO SERVICE OTHER PARTS OF THE FITTING AS THIS WILL VOID THE WARRANTY.**
- AS THE INSTALLER, IT IS YOUR RESPONSIBILITY TO ENSURE YOU COMPLY TO ALL RELEVANT BUILDING AND SAFETY CODES. FOR EXAMPLE THE BCA, AS3000. REFER TO APPLICATION STANDARDS FOR THE RELEVANT RULES.**

BATTERY LIFE

To maintain the economic life of this product it is required that the battery be discharged and recharged at least once every 6 months. The battery life can be reduced if the battery is not discharged as per the requirements of AS/NZS 2293 or an equivalent standard. Increasing the number of duration tests above that as defined in AS/NZS 2293 or an equivalent standard can have a positive effect on the battery performance as long as 12 discharge cycles per year is not exceeded.



DIMENSIONS



Voltage	~230 V	Class	2	Wiring	Hardwired
Frequency	50 Hz	Duration	90 / 120 min	Battery Type	LiFePO4 6.4 V
Max. Ambient Temp.	40°C	IP Rating	IP20	Charging Time	16 hours
Emergency Class.	D40	Mounting Type	Surface or rod mount	Charger Type	Variable
Average Power Consumption	0.45 W	Max. Power Consumption	2.5 W		

ORDERING INFORMATION						ACCESSORIES AND SPARE PARTS	
CODE	DESCRIPTION	PRODUCT NUMBER	CARTON QTY.	WEIGHT (NET/ GROSS)	CODE	DESCRIPTION	
01696	Ledfire Lite Emergency Luminaire	9336462016961	4	- Kg / - Kg	01302	Battery 1500mAh 2 Cell LiFePO4	

SPACING TABLE (DISTANCE BETWEEN FITTINGS)		MOUNTING HEIGHT (M)															
LUX	CLASSIFICATION																
		2.1	2.4	2.7	3	3.3	3.6	4	4.5	5	6	7	8	9	10	15	20
0.2	D40	16.7	17.4	18.0	18.6	19.1	19.6	20.1	20.8	21.3	22.1	22.7	23.0	23.1	23.1	19.4	
0.5	D40	12.0	12.5	12.9	13.2	13.5	13.8	14.0	14.3	14.5	14.5	14.3	13.7	12.8	11.4		
1	D40	9.3	9.6	9.8	10.0	10.1	10.2	10.3	10.2	10.1	9.4	8.2	4.8				

WARRANTY STATEMENT

Ektor products are distributed in Australia and New Zealand by Evolt Pty Ltd (Evolv). The Australian Consumer Law as well as other Australian laws guarantee certain conditions, warranties and undertakings, and give you other legal rights, in relation to the quality and fitness for purpose of Ektor products sold in Australia. In Australia, our goods come with guarantees that cannot be excluded under the Australian Consumer Law. You are entitled to a replacement or refund for a major failure and compensation for any other reasonably foreseeable loss or damage. You are also entitled to have the goods repaired or replaced if the goods fail to be of acceptable quality and the failure does not amount to a major failure. What constitutes a major failure is set out in the Australian Consumer Law. Nothing in this Warranty purports to modify or exclude the conditions, warranties and undertakings, and other legal rights, under the Australian Competition and Consumer Act and other Australian laws. Ektor products are warranted in Australia for a period of 12 months from the date of delivery of the product, provided that the products are properly stored, installed, used and maintained in accordance with the instructions contained within their manual. Products that have been altered in any way or used other than in accordance with their instructions are not covered by this warranty.

This warranty is not transferable and is valid only in the hands of the purchaser of the product. The warranty does not cover Ektor products other than those purchased from Evolv. Proof of purchase must be provided to Evolv with any warranty claim. Evolv recommends that the purchaser attaches their proof of purchase to their product manual. Evolv's total liability under this warranty is limited to the cost of repair or replacement of the faulty product. Evolv may satisfy its obligations under this warranty in full by repair or replacement of a faulty product. This warranty does not apply to consumable items such as lamps or batteries or other items that can be classified as consumable. For the avoidance of any doubt, any and all warranties or conditions which are not guaranteed under the Australian Competition and Consumer Act or the Australian Competition and Consumer Regulations 2010 and which are not expressly included in this Warranty as additional warranties or conditions are excluded. This Warranty does not cover loss or damage caused by wear and tear, misuse, incorrect installation or operation, failure to clean and maintain, incorrect voltage or non-authorized electrical connections, adverse external conditions (such as power surges and dips, acts of God, exposure to heat, corrosion, insect or vermin infestation), use of non-authorized or defective parts or globes, or to items that have been repaired other than by Evolv or a repairer approved by Evolv.

TECHNICAL SUPPORT AND TROUBLESHOOTING

For further assistance in using this product, consult your nearest wholesaler or Evolv Pty Limited.